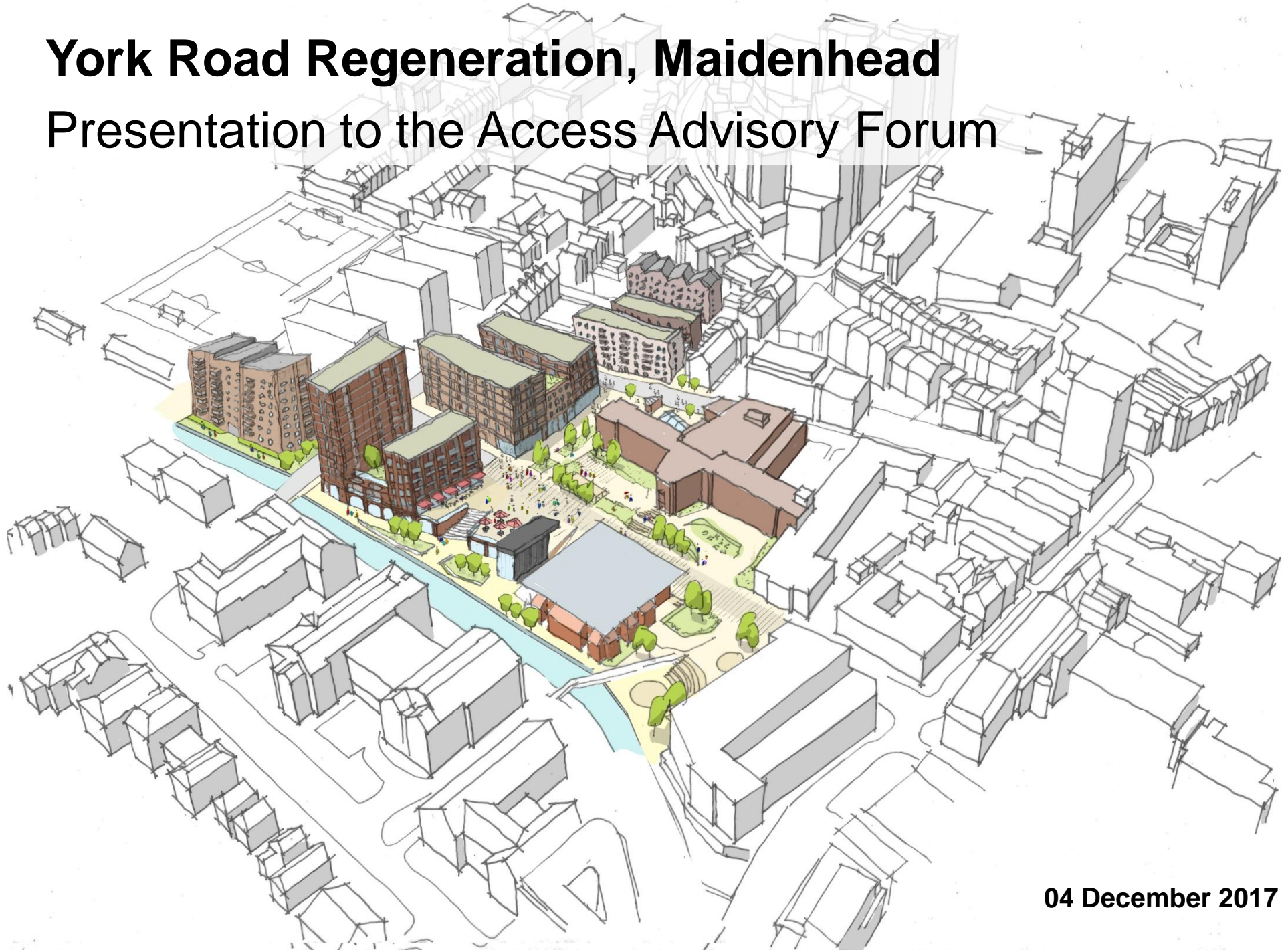


York Road Regeneration, Maidenhead

Presentation to the Access Advisory Forum



04 December 2017

Development Overview

- **Public realm-led regeneration of the Town Centre focussed on sites around York Road**
- **Circa 280 dwellings across 6 blocks & circa 1,500sqm of commercial space**
- **Provide a new high quality and multifunctional public space**
- **Make the most of the York Stream edge**
- **Promote a 'green' Town Centre**
- **Restore historic street edges**
- **Respect the civic setting**
- **A responsive environment**
- **Design which is 'Distinctly Maidenhead' and accessible to all**

Development Overview

Existing

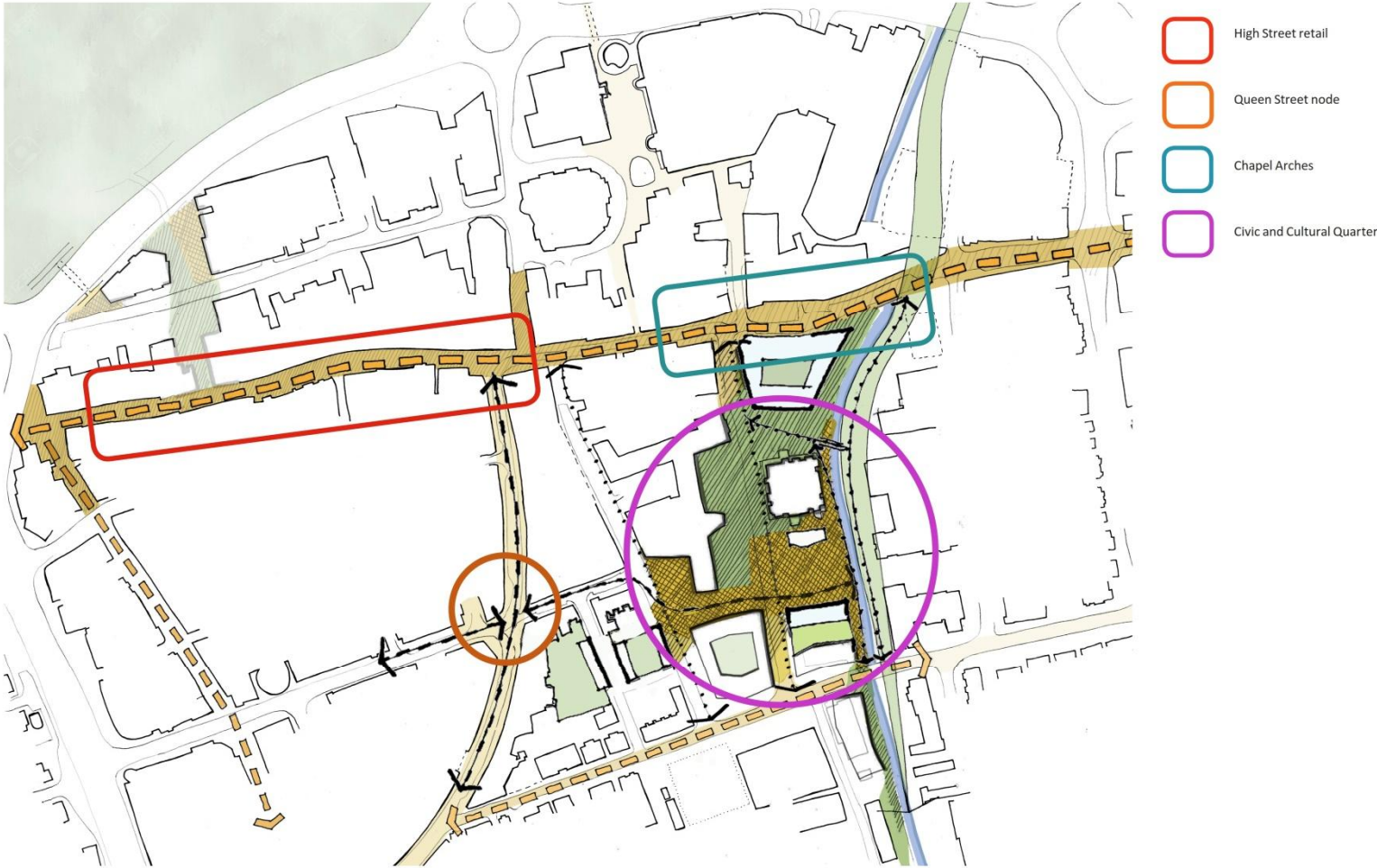


Source: Google Earth

Proposed



Connectivity & Evolving Public Realm



York Road Maidenhead
Connectivity: town centre

The Boathouse Design Studio 27 Ferry Road Teddington TW11 9NN



Connectivity & Evolving Public Realm



York Road Maidenhead
Connectivity: Civic and Cultural Quarter

The Boathouse Design Studio 27 Ferry Road Teddington TW11 9NN

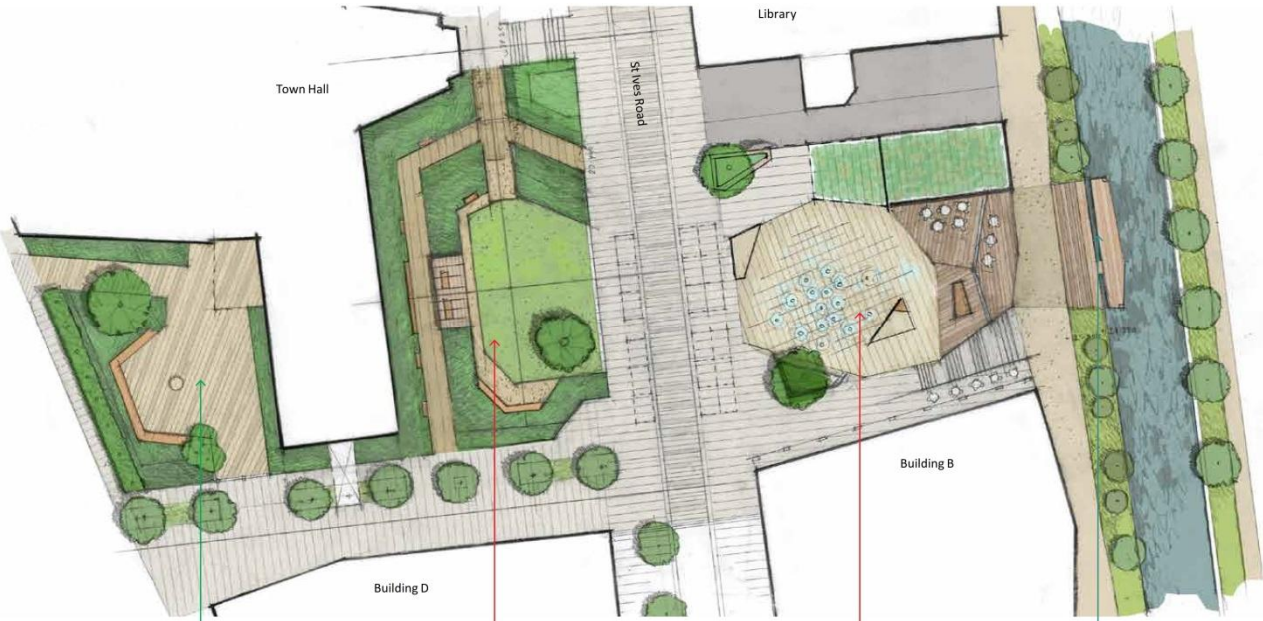


St Ives Road Vision

- **Improve Public Realm with new Town Hall Gardens, Library Square and Waterside spaces**
- **Integrate Public Realm into vision for strong east-west connection between the Waterway and Town Centre**
- **Downgrade St Ives Road carriageway with raised table through the area between the Town Hall Gardens and Library Square**
- **Maintain delineated carriageway (small kerb upstand / material differentiation) to provide clear path for vehicles through a low speed, pedestrian friendly environment.**
- **Provide clear crossing opportunities (tactile paving / dropped kerbs) to assist mobility / visibility impaired users**
- **Convert southern end of St Ives Road to two-way operation (south of Library Square) to minimise development traffic further to the north**

St Ives Road Vision

Public Realm Strategy



Cultural Courtyard



Town Hall Gardens



Library Square



Waterside

York Road Maidenhead
Public Realm core spaces

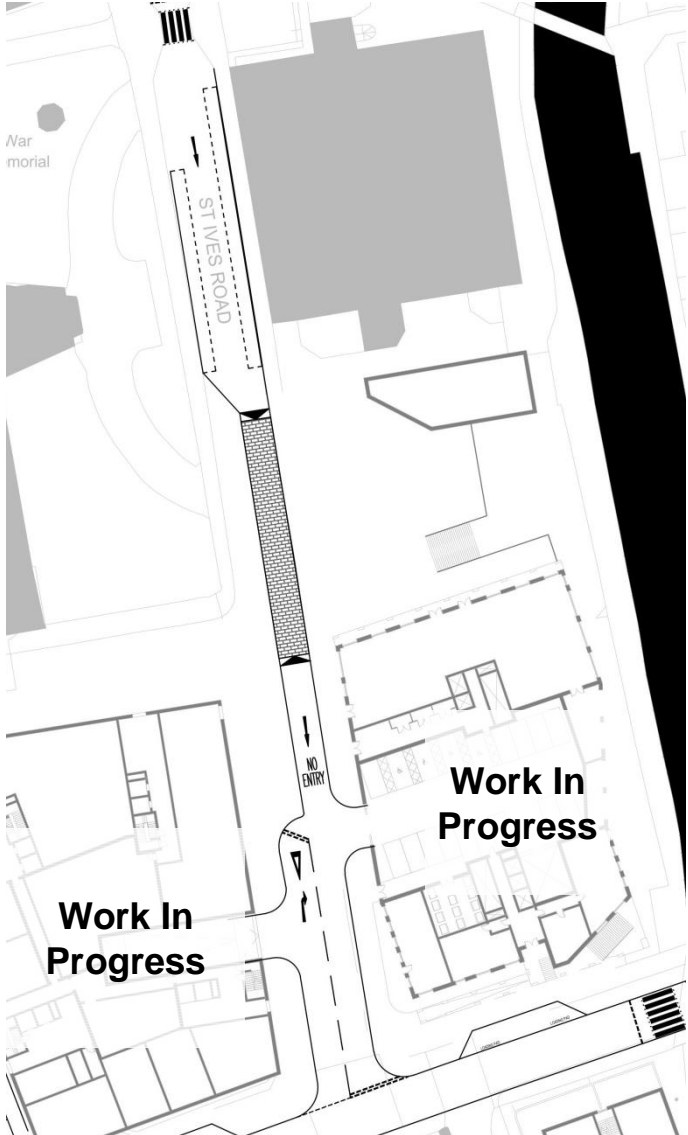
The Boathouse Design Studio 27 Ferry Road Teddington TW11 9NN



St Ives Road Vision - Highways

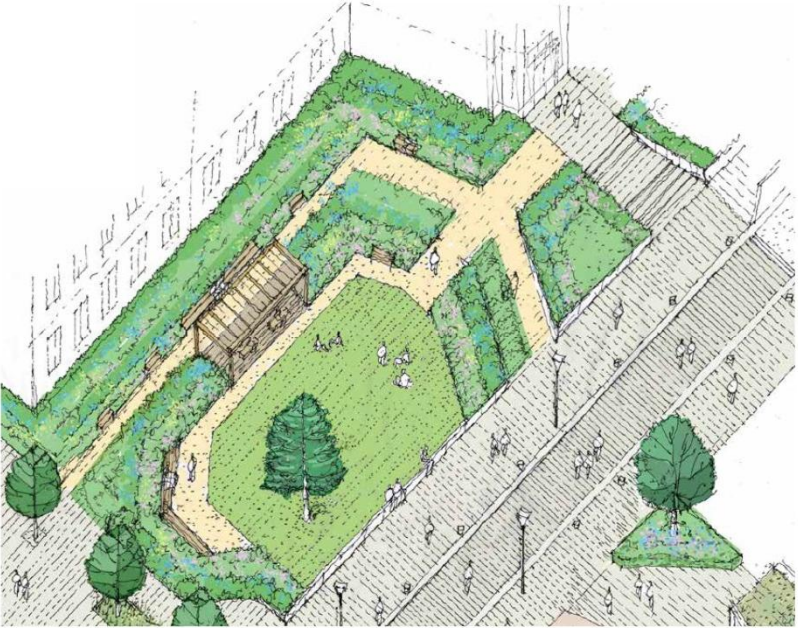


Presentation to Access Advisory Forum December 4, 2017



Northern Area - Town Hall / Library

Public Realm Vision



Pergola feature provides a focal point to the garden



Simple lawn for flexible use



Rationalised planting beds framing the gardens



Raised edge to lawn



Lush herbaceous borders for seasonal colour

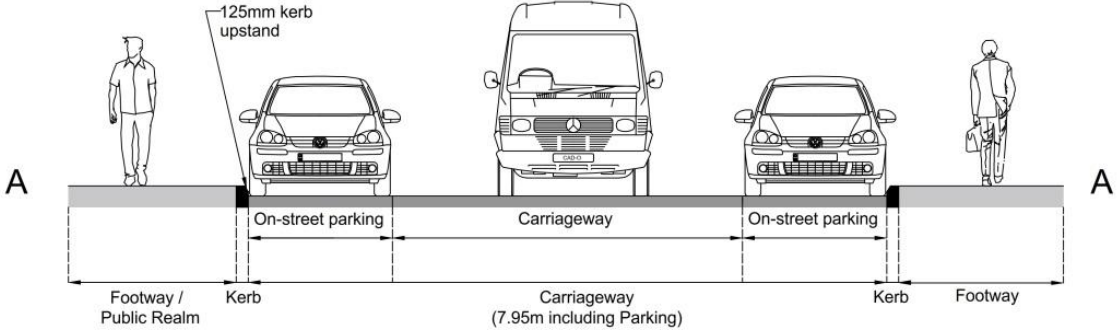
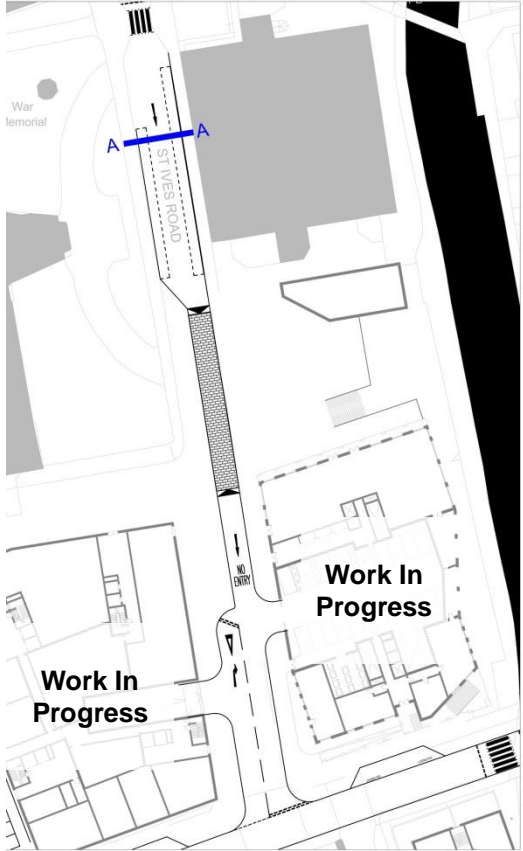
York Road Maidenhead
Town Hall Gardens

The Boathouse Design Studio 27 Ferry Road Teddington TW11 9NN

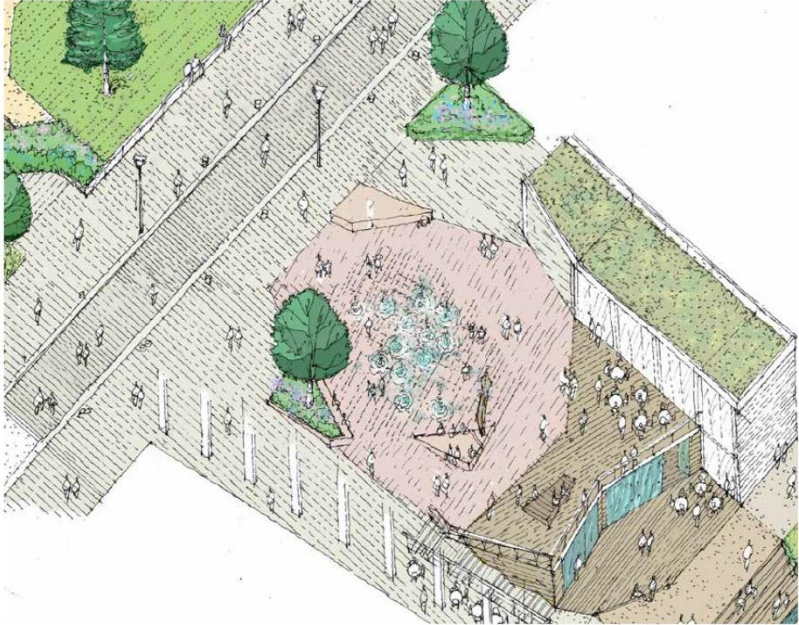


Northern Area - Town Hall / Library

Carriageway Cross-section



Library Square Public Realm Vision



Option for green roof over pavilion



Animated fountains creating activity and fun



Cool palette of paving throughout the 'main space'



Decked areas for warmth and softening



Opportunity for public art celebrating history



Sculptural seating elements tying into the paved carpet

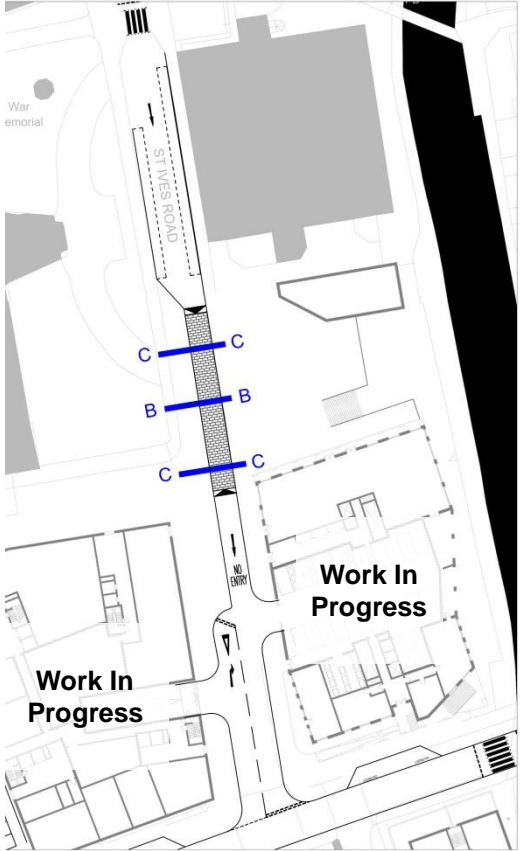
York Road Maidenhead
Library Square

The Boathouse Design Studio 27 Ferry Road Teddington TW11 9NN

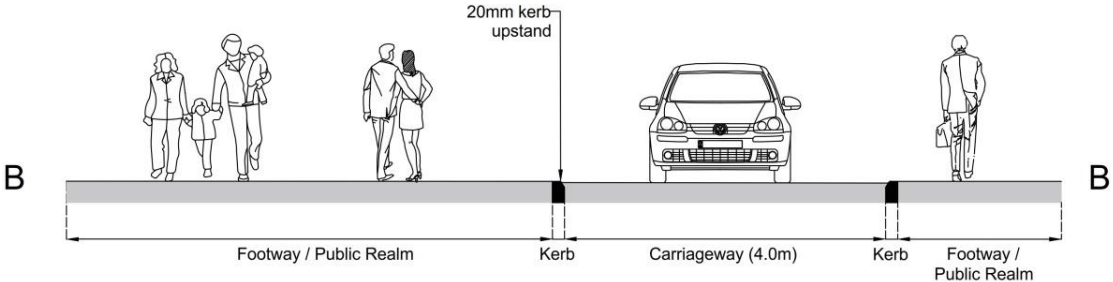


Library Square

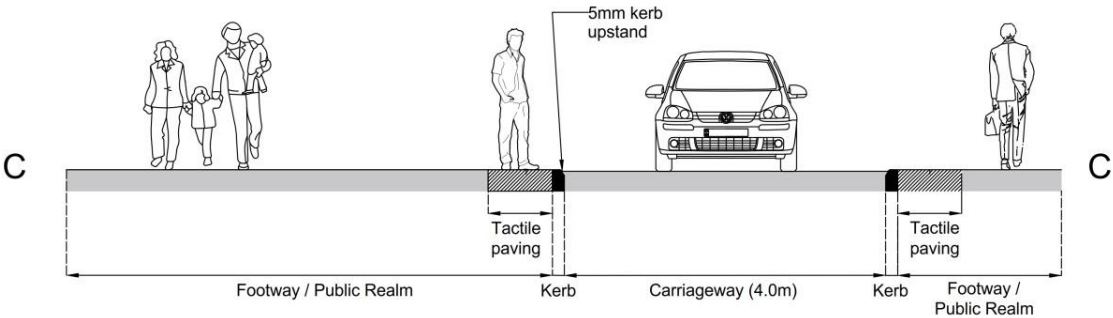
Carriageway Cross-sections



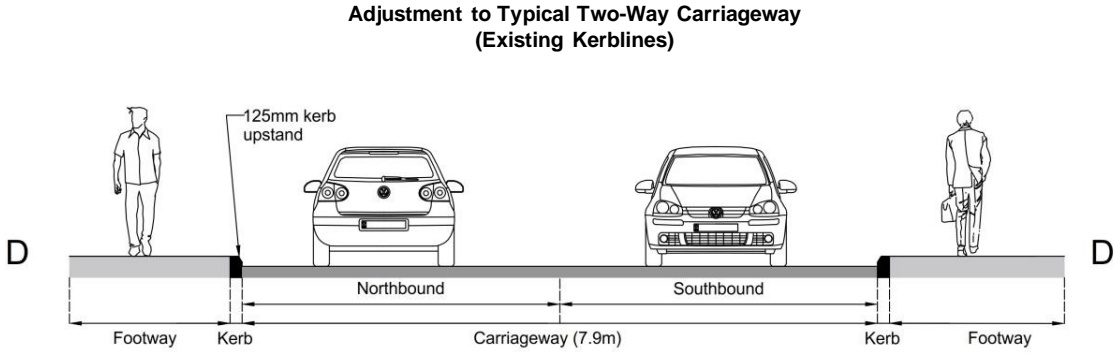
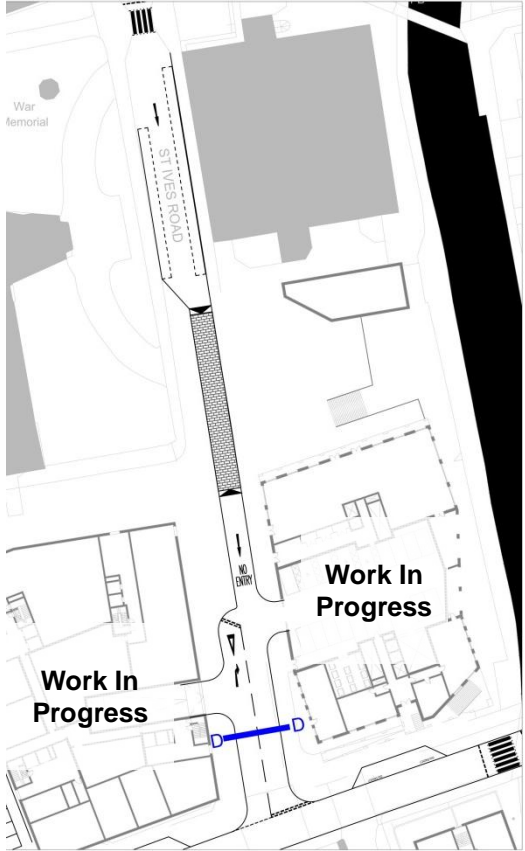
Typical Public Realm / Raised Table Profile



Potential Crossing Point



Southern Area Carriageway Cross-section



Examples

Victoria Street, Luton



Source: Google Map 2017

Eastcheap, Letchworth Garden City



Source: Google Map 2017

Leys Avenue, Letchworth Garden City



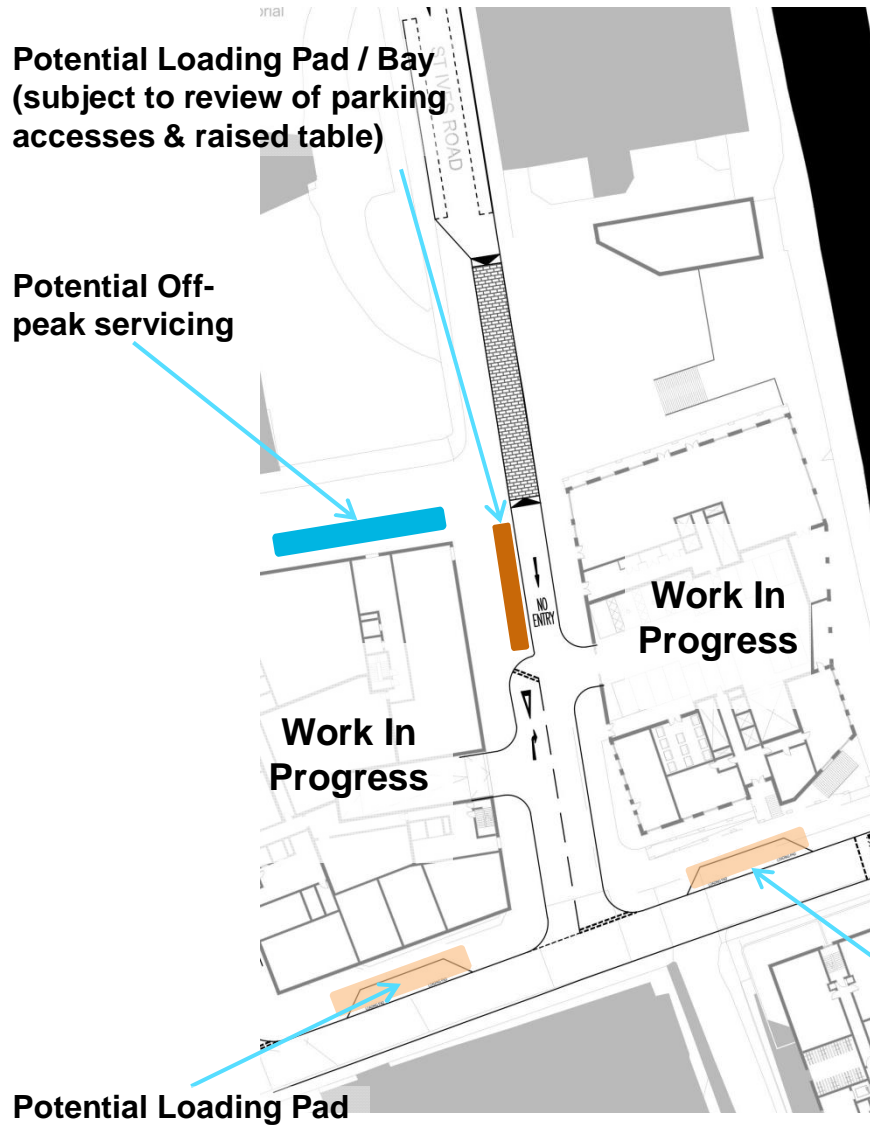
Source: Google Map 2017

High Street, Slough



Source: Google Map 2017

Potential Servicing & Delivery Strategy



Source: Google Map 2017



Source: Google Map 2017

Thank You

04 December 2017

AECOM